



Hilton Wichita Airport Executive Conference Center

2098 Airport Road, Wichita, Kansas, United States 67209-1941

Tel: 1-316-945-5272, Fax: 1-316-945-7620

[FIND OUT MORE](#)

[BOOK NOW](#)

The Hilton Wichita Airport hotel is situated less than one-eighth mile from the Wichita Mid-Continent Airport in Kansas. The Hilton is within walking distance from three Wichita area FlightSafety training centers and offers shuttle service to local corporate offices, such as Bombardier/Learjet, Cessna, Raytheon Aircraft Services, Vulcan Chemicals and Case/New Holland Corporation. Whether Kansas visitors are seeking a convenient location for corporate travel, conventions or a weekend getaway in Wichita, they will enjoy the warm hospitality of our staff and the comfort of luxurious Hilton hotel accommodations.

For Your Business Convenience

| | |
|--------------------------------|-----------------------|
| Audio/Visual Equipment Rental | Business Center |
| Complimentary Printing Service | Express Mail |
| Fax | Meeting Rooms |
| Notary Public | Photo Copying Service |
| Printer | Secretarial Service |
| Typewriter | |

HOTEL LOCATION

The Hilton Wichita Airport Hilton is located in west Wichita at Mid-Continent Airport, across the street from the terminal . One mile south of Highway 54/400 and Ridge Road intersection.

Parking:

Self Parking: Complimentary
Secured: Available
Parking Information: Complimentary

Dining

Legends



Casually elegant Legends Restaurant and Lounge offers entrees to please even the most particular palate, serving breakfast, lunch and dinner. Legendary evening favorites include T-Bone Tuesday, Big Rib Eye Wednesday, Thursday night's Come Eat a Fajita, Friday night's prime rib buffet,

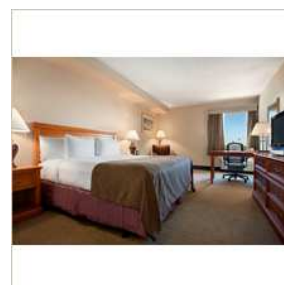
Saturday's seafood extravaganza and Sunday's award-winning champagne brunch. Weekday lunch buffets are also featured. Try our pastry chef's delectable desserts!

LEISURE FACILITIES

Legends Restaurant and Lounge on site
Complimentary Wireless High-Speed Internet Access
Conveniently located across the street from Mid-Continent Airport
22,000 square feet of flexible meeting space

Rooms

Guest Rooms



All sleeping rooms are non-smoking and have complimentary wireless internet access. Oversized standard rooms feature either two double beds or one king sized bed, desk, 2 two-line phones, coffee maker, hair dryer, extra pillow and blanket, iron/board, and USA Today delivery.





Suites



All suites are non-smoking with one king size bed. Two room suites include bedroom and separate living room area, highlighted in neutral carpet and cherry furnishings. Wet bar with refrigerator in all suites, oversized desk, 2 two-line phones, coffee maker, hair dryer, extra pillows and blanket,

iron/board, bottled water, bathrobes and USA Today delivery. Six of the 11 suites have jacuzzi tubs.

Executive Rooms



The Concierge Level is all non-smoking and features either one king or 2 double bed guestrooms. Amenities include complimentary wireless internet access, oversized desk, coffee maker, iron/board, and bottled water. Private Lounge with daily breakfast, evening hors d'oeuvres and honor

bar(Sun-Thur). Nightly turndown service.

Accessible Rooms



Enjoy our accessible rooms!

While You're In Town

Aviation Museum - 15 MI - S

City Center - 8 MI - E

COWTOWN - 7 MI - E

Exploration Place - 8 MI - E

Sedgwick County Zoo - 4 MI - NE

WICHITA ART MUSEUM - 6 MI - E

WICHITA ICE RINK - 6 MI - E

Family Plan

Children's Menu

Cribs

High chairs