



Hilton San Diego Gaslamp Quarter

401 K Street, San Diego, California, United States 92101

Tel: 1-619-231-4040, Fax: 1-619-231-6439

FIND OUT MORE

BOOK NOW

Located in the heart of the historic Gaslamp Quarter, the Hilton San Diego Gaslamp Quarter hotel in San Diego, California is surrounded by shopping, theater, art galleries and more than 100 restaurants and night clubs . Across the street from the San Diego Convention Center , two blocks from Petco Park , and three miles from San Diego International Airport, our Hilton Gaslamp hotel is an urban retreat in the midst of a booming downtown San Diego, California scene. Here you will find a sophisticated Gaslamp Quarter hotel that mixes modern design with attentive service and impressive amenities.

For Your Business Convenience

- | | |
|-------------------------------|-----------------|
| Audio/Visual Equipment Rental | Business Center |
| Express Mail | Fax |
| Meeting Rooms | Modem |
| Photo Copying Service | Printer |
| Video Conferencing Available | |

HOTEL LOCATION

The Hilton San Diego Gaslamp Quarter is the closet hotel to the San Diego Convention Center, located 4 miles from the San Diego International Airport This sleek and stylish urban boutique hotel is located at the gateway to the Historic Gaslamp Quarter which remains the hub of downtown's nightlife scene, the place to see and be seen. The Quarter has more than 90 restaurants and countless chic clubs and boutiques. For the business traveler, we are located in the heart of the downtown business district.

Parking:

- Valet Parking: 35.00 USD Valet Parking Only
- In/Out Privileges: Available
- Secured: Available
- Covered: Available
- Parking Information: Parking managed by Sunset Parking



Dining

New Leaf Restaurant



Innovative California cuisine. Our Executive Chef prepares contemporary world cuisine. Comfortable atmosphere that features indoor or outdoor seating. A breakfast buffet is featured daily. Serves breakfast, lunch and dinner.

Room Service

Enjoy In-Room Dining at it's best, featuring full menu items from the New Leaf Restaurant and Bar.

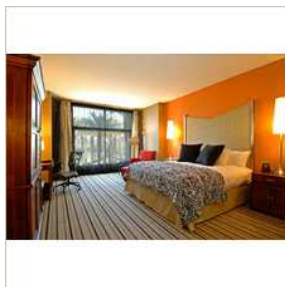
LEISURE FACILITIES

- Closest Gaslamp Quarter Hotel to the Convention Center
- Only Two Blocks from the Padres PETCO Park
- Enjoy Our 24 Hour Business Center
- See and Be Seen at Our Outdoor Fire Pit



Rooms

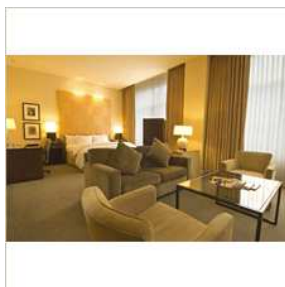
Guest Rooms



All of our deluxe accommodations include one king or two double beds, over-stuffed chair with ottoman, coffee maker, down comforters and down pillow top mattresses, spacious work desk, two phones, each with two lines, *complimentary high speed internet access*, dataport and voicemail, 42"

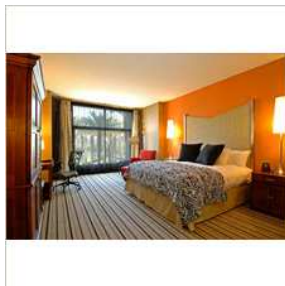
Flat screen T.V. with premium channels and On-Command movie service, 24-hour room service

Suites



The One-Bedroom Suites features the same elegance and services of the deluxe rooms, plus a separate living area with a sofa bed, two 25" TV's, large bathrooms, and some with whirlpool tubs.

Accessible Rooms



Enjoy our accessible rooms!

While You're In Town

- 32nd Street Navy Base - 1 MI - NW
- Balboa Park & Museums - 2 MI - NE
- City Center - 3 BLK - W
- Coronado Island - 5.4 MI - SW
- Gaslamp Quarter - 1 BLK - N
- Horton Plaza - 0.05 BLK - N
- La Jolla/ Aquariums - 12 MI - NW

Family Plan

- Babysitting Service
- Children's Menu
- Cribs
- High chairs