



## Hilton Washington DC North/Gaithersburg

620 Perry Parkway, Gaithersburg, Maryland, United States 20877

Tel: 1-301-977-8900, Fax: 1-301-869-8597

[FIND OUT MORE](#)

[BOOK NOW](#)

The Hilton Washington DC North/Gaithersburg hotel is conveniently located in the I-270 hi-tech business corridor, just outside the I-495 Beltway surrounding Washington, DC, the Nation's Capital. This Hilton Gaithersburg, MD hotel is part of a growing business, entertainment, and residential area in suburban Maryland and is convenient to Gaithersburg, Rockville, Bethesda, Germantown, and Frederick business communities. Meanwhile, Georgetown, Washington DC, and Northern Virginia are only a short distance away. The Shady Grove Station of Washington's Metro Subway system is only five miles away and accessible via complimentary shuttle service from the hotel. The Hilton Washington DC North/Gaithersburg hotel is approximately 35 minutes away from Ronald Reagan National Airport (DCA), and less than an hour from Dulles International (IAD), Baltimore Washington International (BWI) and just 10 minutes from the Montgomery County Airpark (GAI).

### For Your Business Convenience

- |                               |                         |
|-------------------------------|-------------------------|
| Audio/Visual Equipment Rental | Business Center         |
| Business Phone Service        | Dicaphone               |
| Express Mail                  | Fax                     |
| Meeting Rooms                 | Modem                   |
| Office Rental                 | Paging Equipment Rental |
| Photo Copying Service         | Printer                 |
| Secretarial Service           | Telex                   |
| Video Conferencing Available  | Video Messaging         |
| Video Phone                   |                         |

### Dining

#### Rooks Corner Restaurant



Rooks Corner Restaurant is renowned for great steaks, crab cakes and other delicious fresh seafood. Its executive chef will tell you that taste, quality, creativity and affordability are his main focus. Open for breakfast, lunch and dinner, this comfortable contemporary restaurant also features a superb

private dining room, ideal for gatherings of up to 20 persons, formal or casual. Rooks Corner Restaurant is open daily from 6:30 am to 10:00 pm. Hours of Operation Breakfast 6:30am-10:00am Weekdays 7:00am-12:00pm Weekends Lunch 11:00am-2:00pm Daily Dinner 5:00pm-10:00pm

#### Rooks Corner Lounge



Adjacent to Rooks Corner Restaurant, the bar and lounge provide a warm and friendly place to enjoy specialty drinks and a diverse bar menu. Be sure to catch up on your favorite news pr sports events on any one of our Plasma TV's. Shake off a busy day with complimentary appetizers and

discounted drinks during our weekday happy hour from 5:00 pm to 7:00 pm. Hours of Operation 11:00am-1:00am Sunday-Thursday 11:00am-2:00am Fridays and Saturdays

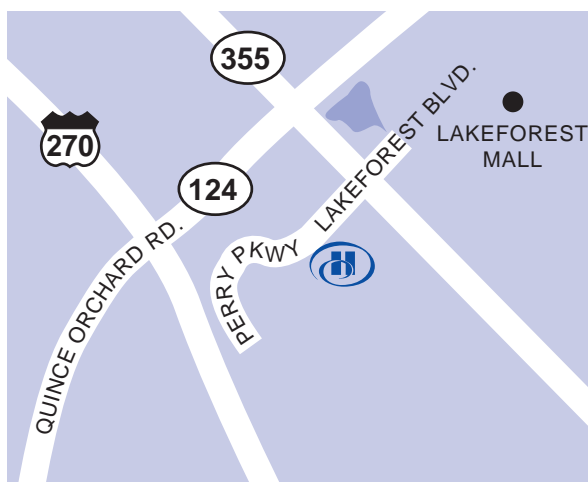
### HOTEL LOCATION

Conveniently located twenty miles Northwest of Washington, DC, just outside the I-495 Beltway, off of Interstate 270, 'the "technology corridor," at exit 11. Minutes from Rockville, Bethesda, Germantown and Frederick.

### Parking:

Self Parking: Complimentary

Parking Information: Plentiful parking for most types of vehicles





### In-Room Dining



Enjoy the convenience of Rooks Corner Restaurant specialties delivered right to your guest room or suite. In room dining available. Hours of Operation 6:30am to 11:00pm Weekdays 7:00pm to 11:00pm Weekends

### Rooks Corner Cafe



Grab your favorite coffee drink on the way to your next meeting, or choose from an array of pasties and sundries. Open Daily 6:00am-1:00 pm

## LEISURE FACILITIES

Complimentary Wireless High Speed Access available throughout the hotel

Well-Equipped Fitness Center

Rooks Café, a Starbucks® Grab-n-Go Outlet

## Rooms

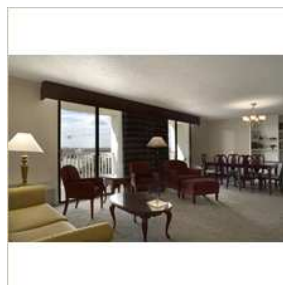
### Guest Rooms



Enjoy our newly renovated standard accommodations featuring the plush Hilton pillowtop bed with triple-sheeting, individual climate control, cable TV with On-Command pay-per-view movies, complimentary high-speed wireless Internet access, two dual line telephones with voicemail,

large work desks with desk-level outlets, Hilton Signature clock/radio with MP3 or CD connectivity, iron and ironing board, hair dryer, coffee maker with coffee and tea, and Crabtree & Evelyn® toiletries.

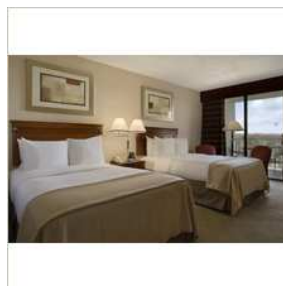
### Suites



Sink into our signature Hilton Serenity Bed™ after pampering yourself with Crabtree & Evelyn's La Source® bath amenities. Take care of business at your personal, spacious workstation featuring complimentary wireless Internet access. For those seeking an additional level of comfort, entertain

friends and colleagues in the sitting area of your Executive Suite, separated from your bedroom by French doors.

### Executive Rooms



Our Executive rooms are oversized, newly renovated accommodations featuring the plush Hilton pillowtop bed with triple-sheeting, two dual line telephones with voice mail, complimentary high-speed wireless Internet access, coffee-maker with coffee and tea, large work desks with

desk-level outlets, iron and ironing board, hairdryer, Crabtree & Evelyn® toiletries, Hilton signature clock/radio with MP3 or CD player connectivity, individual climate control, and cable TV with On-Command pay-per-view movies.

### Accessible Rooms



Enjoy our newly renovated accessible accommodations featuring the plush Hilton pillowtop bed with triple-sheeting, Individual climate control, cable TV with On-Command pay-per-view movies, complimentary high-speed wireless Internet access, two dual line telephones with voicemail,

large work desks with desk-level outlets, Hilton Signature clock/radio with MP3 or CD connectivity, iron and ironing board, hair dryer, coffeemaker with coffee and tea, and Crabtree & Evelyn® toiletries. We have three rooms with roll-in showers and all other accessible rooms are equipped with grab bars.

## While You're In Town

Annapolis - Waterfront - 55 MI - E

Baltimore - Inner Harbor - 40 MI - NE



- City Center - 20 MI - NE
- Germantown SoccerPlex - 8 MI - N
- Gettysburg - 50 MI - N
- Harpers Ferry - 50 MI - NW
- Metro Station - 5 MI - E

### *Family Plan*

- Children's Menu
- Cribs
- High chairs
- Playpen