



Hilton Phoenix East/Mesa

1011 West Holmes Avenue, Mesa, Arizona, United States 85210-4923

Tel: 1-480-833-5555, Fax: 1-480-649-1886

[FIND OUT MORE](#)

[BOOK NOW](#)

The Newly Renovated Hilton Phoenix East/Mesa hotel in Mesa, Arizona is centrally located in the heart of Phoenix's East Valley. This Mesa, Arizona hotel is just 12 miles from Phoenix Sky Harbor Airport and minutes away from Phoenix, Scottsdale, Chandler, Tempe and Gilbert. Our ideal location allows for easy freeway access in all directions to attractions such as Arizona State University, the Phoenix Zoo, Chase Field, the Heard Museum and corporate offices including Motorola, Boeing, Honeywell and Intel. Las Sendas, Troon and the courses of American Golf are only a short drive away; let our Concierge make arrangements for a tee time during your stay. Fiesta Mall is right across the street and a 9-hole executive golf course is adjacent to the Hilton Phoenix East/Mesa, AZ hotel. There are numerous restaurants, shopping centers, movie theatres and activities nearby and our complimentary shuttle will take you there within a three mile radius.

For Your Business Convenience

Audio/Visual Equipment Rental	Business Center
CD-ROM available	Computer workstations - IBM
Conference room rental	Fax
High-speed internet service	Mail - regular, overnight
Meeting Rooms	Photo Copying Service
Printer	Secretarial Service

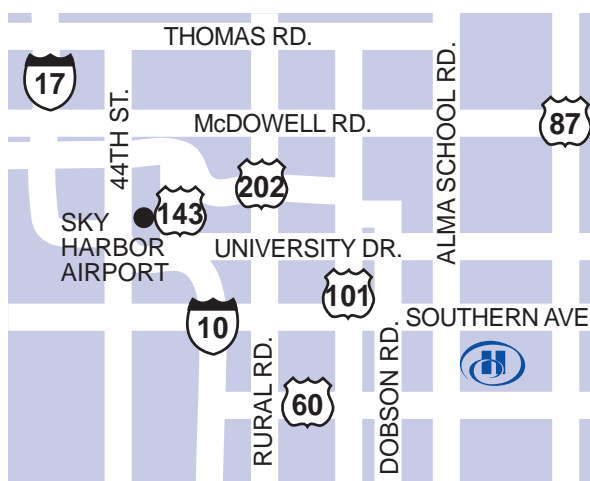
HOTEL LOCATION

Located in the Greater Phoenix area, the Hilton Phoenix East in Mesa is nearby many attractions and businesses. We're also minutes from Sky Harbor International Airport, downtown Phoenix, Scottsdale, Tempe, and Chandler. For your convenience, we offer complimentary shuttle service to all the attractions within a three-mile radius of the hotel, including the one-million-square-foot Fiesta Mall, located next door to our hotel.

Parking:

Self Parking: Call hotel for information

Parking Information: Complimentary



Dining

Atrium Lounge



A place to relax, unwind, and cool off from a day in the Arizona sun. Cheer up your favorite sports team on one of our many televisions or relax with friends. Happy hour is served 5-7pm. Or try our nightly drink specials and a variety of scrumptious appetizers.

Zuni Bar and Grill



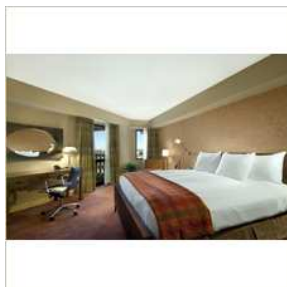
Located in the lobby of the Hilton Phoenix East/Mesa Hotel, our restaurant offers a variety of continental cuisine, award winning local micro-brewed beers and an array of specialty cocktails. Breakfast, lunch and dinner at the Zuni Grill are always a treat. We welcome hotel guests and locals alike

to an exciting variety of American Regional cuisine featuring steaks, fresh fish, pizzas, pastas and a selection of Southwestern specialties that include: -Tequila battered shrimp -Garlic marinated pork chop -Red currant glazed Halibut -Cocoa grilled pork tenderloin -Seared sea bass with mango-jalapeno salsa Experience the finest in buffets from our daily breakfast buffet to our superb Sunday Champagne Brunch. Every Sunday we feature an omelet station, carved meats, specialty salads, seafood and all of the traditional breakfast dishes. And be sure to leave room for our mouthwatering selection of fresh desserts.



Rooms

Guest Rooms



Our recently renovated oversized standard rooms surround you in 364 square feet of comfort, complemented by brunette wood furnishings, rich autumn colors and velvety textures. Choose between one king or two queen beds with pillow-top mattress, or request connecting rooms for larger

parties. Each room also features French-door access to your own private step out balcony with a panoramic view of Arizona's vibrant blue skies and desert landscape. Spacious bathrooms feature marble vanities, open cabinetry, thick cotton towels and Crabtree & Evelyn® amenities. A delivered daily newspaper, mini-refrigerator, hairdryer, and coffeemaker complete those early morning wake-up calls. Wireless high-speed internet access and a telephone with speakerphone and voice mail keep you in touch with friends, family and clients. Express checkout is available on the television along with premium cable channels, pay-per-view movies, satellite music selections, internet access and Nintendo® games. Make the best of your Phoenix experience at Hilton Phoenix East/Mesa.

Suites

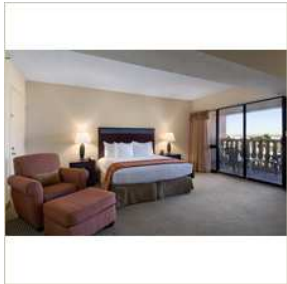


Our remodeled junior suites provide 476 square feet of space with living and sleeping areas containing either one king or two queen pillow-top beds and a sleeper sofa. A comforter reminiscent of the softest suede, luxuriantly silky white duvet and an abundance of fluffy pillows present an inviting backdrop for

an excellent night's sleep. All suites feature two televisions - one in the living room and one in the bedroom - with express checkout, premium cable channels, the latest in pay-per-view movies, satellite music, internet access and Nintendo® games. Other amenities include wireless HSPA, two telephones, a marble top wet bar in the living area, bathrobes and upgraded Crabtree & Evelyn® bathroom amenities. Every suite also comes with Executive Club privileges for complimentary continental breakfast and evening cocktail and hors d'oeuvres featuring hot and cold items and premium liquors. For special occasions or to simply treat yourself, enjoy one of our two luxurious and spacious specialty suites. The Sedona is an elegant premium suite of 775 square feet featuring upgraded contemporary-style decor with a beautiful view of the surrounding mountains. This suite includes a living room, master bedroom with king size bed, sitting area, dining room with table for six and private walk out balcony. The large master bath features a walk-in closet, separate walk-in shower and Jacuzzi® tub. The Presidential Suite features over 1,500 square feet of living space with private office, living room, dining area, bar, kitchen, four bathrooms and a master bedroom. A large screen television, VCR, kitchen with separate service entrance, refrigerator and microwave, dining room table for eight and private balcony ensure you'll enjoy all the comforts of home. The spacious master bedroom features a king size bed and the oversized master bath includes double sinks, large showers and a Jacuzzi® tub surrounded by mirrors. Please call the hotel directly for pricing and availability for either of our specialty suites.



Executive Rooms



Our recently renovated Executive guestrooms offer access to the Executive Club lounge for our scrumptious continental breakfast and evening reception of hot and cold hors d'oeuvres and premium cocktails. Choose between one king or two queen pillowtop beds or request

connecting rooms for larger parties. Each room includes french doors to a step out balcony where you'll enjoy a panoramic view of the Phoenix Valley of the Sun or look out onto the lush greens of the neighboring golf course. All Executive guestrooms offer mini refrigerators, wireless HSIA, two phone lines and voicemail. Express checkout is available on the television along with premium cable channels, pay-per-view movies, satellite music selections, Internet access and Nintendo® games.

Accessible Rooms



Our accessible rooms feature lowered counters and wide doorways. Roll-in showers are also available.

While You're In Town

Apache Junction - 20MI

Apacheland Movie Studio - 26MI

Arizona Mills Outlet Mall - 5MI - W

Arizona Science Center - 15MI - W

Arizona State University - 6MI - NW

Arizona Temple Visitors Center - 2MI - N

ASU's Gammage Auditorium - 6MI - W

Family Plan

Children's Menu

Cribs

Family Package Offered