



Hilton Memphis

939 Ridge Lake Boulevard, Memphis, Tennessee, United States 38120

Tel: 1-901-684-6664, Fax: 1-901-762-7496

[FIND OUT MORE](#)

[BOOK NOW](#)

The Hilton Memphis hotel in Memphis, Tennessee is located in the heart of the East Memphis business district and a short drive from Beale Street, FedEx Forum, Elvis Presley's Graceland, the Memphis Zoo, Liberty Bowl, Memphis International Airport (MEM), The University of Memphis, The University of Tennessee at Memphis, the Civil Rights Museum, the Lorraine Hotel, and downtown Memphis, Tennessee. Memphis is also the home of the Grizzlies and the Redbirds; so come to Memphis, enjoy a game and stay with us at the Hilton Memphis, TN hotel.

For Your Business Convenience

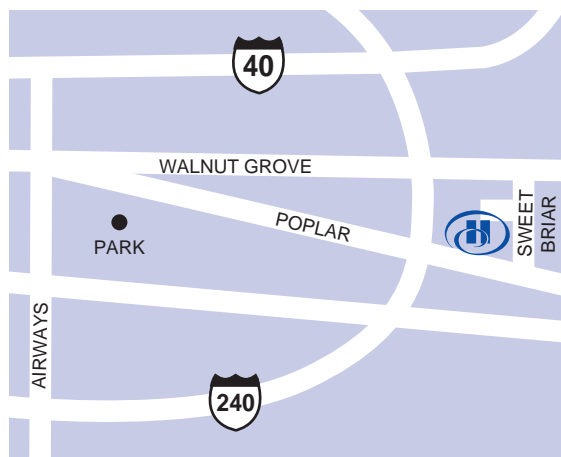
Audio/Visual Equipment Rental	Business Center
Express Mail	Fax
Meeting Rooms	Modem
Notary Public	Photo Copying Service
Printer	Typewriter
Video Conferencing Available	

HOTEL LOCATION

The Hilton Memphis is located in the heart of east Memphis business district, 20 minutes from downtown and the Cook Convention Center. Hotel is in loop of several office buildings including Marsh & McLennan, Sedgwick CMS, ServiceMaster, Vitro, Exel Logistics, Sparks Company, Kroger and Boyle. The Hilton Memphis is just minutes from your shopping, dining and recreation needs and only 10 minutes from the University of Memphis

Parking:

Self Parking: Complimentary
 Valet Parking: 8.00 USD Per day
 In/Out Privileges: Available
 Parking Information: hotel owned and managed



Dining

Rook's Corner



An American Bistro serving classic foods with a whimsical twist. Features a breakfast buffet daily with omelets and waffles made to order. We also offer an affordable lunch buffet every Monday - Friday. Dinner specials are featured in Rook's Corner every evening. Open daily for breakfast, lunch and dinner.

The Lobby Bar



Overlooking the award winning hotel grounds, enjoy your favorite martini while watching one of our 52" Plasma HDTV's.

In Room Dining



Enjoy your favorite Rook's Corner dish in the privacy and convenience of your own guest room. Open for breakfast 6:30 AM-11:00 AM and for lunch and dinner from 11:00 AM - 11:00 PM

LEISURE FACILITIES

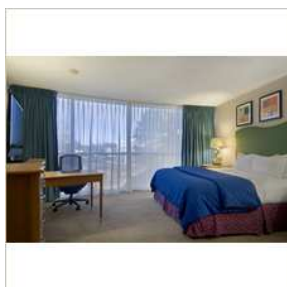
Located in the Center of the "Poplar Corridor"



Close to the Pink Palace, Graceland, Memphis Zoo, and other Memphis Attractions

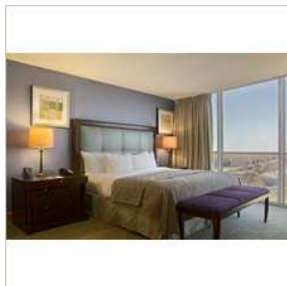
Rooms

Guest Rooms



One king or 2 double beds, flat panel TVs, wireless high speed internet available, large work desk, ergonomic desk chair, 2 speaker phones, and ,coffee maker, iron/board, On Command movies, digital thermostats.

Suites



The Presidential Suite comes with a king sized guestroom with a deluxe bathroom which is equipped with a jacuzzi® bathtub. The guestroom has two french doors which open up to a 3-bay parlor. The parlor includes a living room, dining room, and a kitchenette/pantry area as well as 2

additional bathrooms. A connecting room with two double beds is also available to expand the suite. The hotel also has 2 Regency Suites which come with either a king guestroom or 2 double beds, or both. The suite has a 2-bay parlor with a living room, dining room/conference room, a small pantry area, and an additional half bath. The hotel also has (4) Executive Suites which has a king guestroom or two double beds which connect to a 1-bay living room. The Executive Suites also have a wet bar and full bathroom.

Accessible Rooms



One king or 2 double beds, flat panel TV's, wireless high speed internet available, large work desk, ergonomic desk chair, 2 speaker phones, coffee maker. Accessible rooms have lowered sink, bars in bathtub and around toilet. We have 2 rooms with roll in showers available. TDD kit available thru Front

Desk.

While You're In Town

Beale Street - 15 MI - W

City Center - 15 MI - W

Civil Rights Museum - 15 MI - W

Graceland - 12 MI - SW

Libertyland - 7 MI - W

Memphis Zoo - 7 MI - W

Tunica , MS Casinos - 35 MI - S

Family Plan

Children's Menu

Children's Video Rental

Cribs

High chairs