



Hilton Molino Stucky Venice

Giudecca 810, Venice, Italy 30133

Tel: 39-041-2723311, Fax: 39-041-2723490

[FIND OUT MORE](#)

[BOOK NOW](#)

Set on Giudecca Island and offering breathtaking scenery, the Hilton Molino Stucky Venice hotel is easily accessible and located only 10km from Venice Airport. Marvel at the views of the city below as you enjoy a drink in the contemporary 8th floor Skyline Bar, savor Chef Franco Luise's modern signature dishes at the Aromi Restaurant & Bar or enjoy afternoon tea in the Rialto Lobby Bar's secluded private courtyard. Hold an event in one of 13 function rooms or convene in Venice's largest ballroom offering a breakout area, wireless internet access and space for up to 1000 guests. Swim lengths in our exclusive rooftop pool or experience complete relaxation at the Fitness and Wellness Center. Work-out in the gym, enjoy a hot stone massage or be pampered with a beauty treatment.

For Your Business Convenience

Audio/Visual Equipment Rental	Business Center
Business Phone Service	Cellular Phone Rental
Dicaphone	Express Mail
Fax	Meeting Rooms
Modem	Office Rental
Paging Equipment Rental	Photo Copying Service
Printer	Secretarial Service
Video Conferencing Available	Video Messaging
Video Phone	

HOTEL LOCATION

The Hilton Molino Stucky Venice hotel is situated on the Giudecca island and is easily accessible from both Venice International Airport and Central Station.

Parking:

Parking Information: 24 hour Car park accessible via water taxi

Dining

Rialto Lobby Bar and Lounge



The Rialto Lobby Bar and Lounge is the perfect meeting place to indulge in a delicious cocktail, coffee, or snack at the Hilton Molino Stucky Venice hotel. During the summer months, guests enjoy a cool drink on the open-air terrace. From April to October the Rialto Lobby Bar and Lounge is open from

8:30am to 12:00am. From November to March the opening hours are 10:00am to 12:00am.

Aromi Restaurant and Bar



Savor Chef Franco Luise's modern signature dishes, based on local ingredients and classic Venetian recipes in the Aromi Restaurant & Bar at the Hilton Molino Stucky Venice hotel. This stylish venue features an opulent cocktail bar and an outdoor terrace, boasting spectacular views of

Venice. The Aromi Restaurant is open all year round for dinner from 7.30pm to 10.30pm



Skylunch Pool Restaurant



The Skylunch Pool Restaurant is the perfect place to relax and enjoy the sunshine during the summer months in Venice. Indulge in a refreshing lunch while admiring views over Venice and the Giudecca Island in this elegant restaurant located on the 8th floor of the Hilton Molino Stucky Venice hotel.

The Skylunch Pool Restaurant is open from May to September. A pool bar service is available from 9.30am to 7:30pm.

Il Molino



Dine in a beautiful, relaxed setting at Il Molino Restaurant, which occupies two of the original buildings at the heart of the Hilton Molino Stucky Venice hotel. Begin your day with a sumptuous Hilton buffet breakfast in this stylish Venetian restaurant.

Skyline Rooftop Bar



Be mesmerized by incredible views of the Venice Skyline, from Canale Giudecca to Piazza San Marco while sitting in this stylish 8th floor Venetian bar. Spoil yourself with an elegant cocktail, a pre-dinner aperitif or a delicious light snack in the most romantic and exclusive venue of the

Hilton Molino Stucky Venice hotel. Please note that the Skyline Rooftop Bar will be closed on Mondays from November to March.

LEISURE FACILITIES

Rooftop Outdoor Pool: take in some breathtaking views of Venice
Spectacular views of Venice: relax in uniquely indulgent luxury and style

Fitness & Wellness Centre: pamper yourself

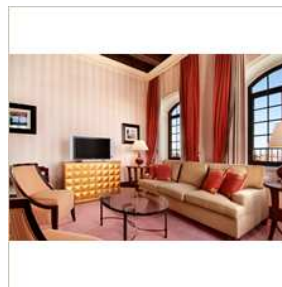
Rooms

Guest Room



Spoil yourself in this spacious 23m²/248sq.ft Hilton Molino Stucky Venice hotel room. Keep in touch with wireless internet access or unwind with a movie on the plasma TV. Refresh in the large marble bathroom . Special touches include fluffy bathrobe, slippers and complimentary magazines.

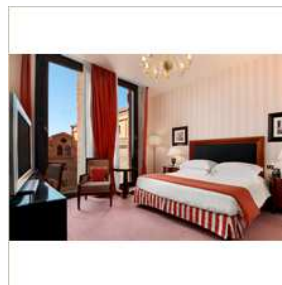
Executive Suite



Take in the Venice views from this 40-66m²/431-710sq.ft suite with living room, relaxation area and work zone . This bright suite offers plasma TV , wireless internet and Executive Lounge access with free continental breakfast. Enjoy a meal at the dinner table or refresh in the luxurious marble

bathroom with separate tub.

Deluxe Room



Feel at home in this 26-30m²/280-323sq.ft room decorated in cool, calm tones and featuring large windows for a bright and airy ambience. Check email at the desk with wireless internet access , unwind watching plasma screen , cable TV or relax on the easy chair. Revive in the marble

bathroom with Crabtree & Evelyn toiletries.

Deluxe Plus Room

Drink in the Venice views from the large windows of this spacious 30-32m²/323-344sq.ft room. Unwind watching movies on the plasma TV or get to work at the large desk with wireless internet access . This modern or traditional room also offers an easy chair, coffee table and marble bathroom.



Executive Room

Welcome to this contemporary or traditional 30-32m²/323-344sq.ft room featuring Executive Lounge access with free continental breakfast. Catch up on work at the desk with wireless internet or relax in the easy chair watching the plasma TV . This bright and airy room offers a luxurious marble bathroom with tub. Executive Room Plus has Venice views.

Relaxation Room

Enjoy this 30-32m²/323-344sq.ft room decorated in cool, calm tones offering relaxation, seating and work areas . Unwind watching plasma TV from the mini chaise longue, keep in touch with wireless internet or refresh in the large marble bathroom with Crabtree & Evelyn toiletries. Special touches include free Spa and fitness centre access.

While You're In Town

Accademia - 0.5 KM - E
Canal Grande - 1 KM - N
Casino - 1 KM
City Center - 0.1 KM - N
Guggenheim - 2 KM - E
Murano Island - 5 KM - N
Palazzo Grassi - 1 KM - E

Family Plan

Babysitting Service
Children's Menu
Cribs